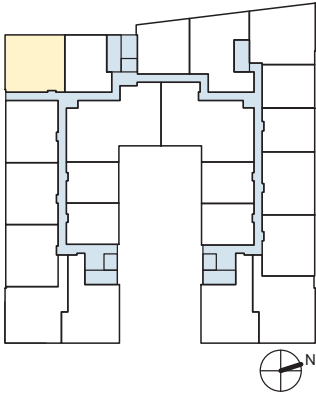


HOBSON'S LANDING

CHART YOUR
COURSE IN
PORTLAND
MAINE

at 383 Commercial Street



UNIT 314

2 Bedroom | 2 Bath

1,239 Square Feet

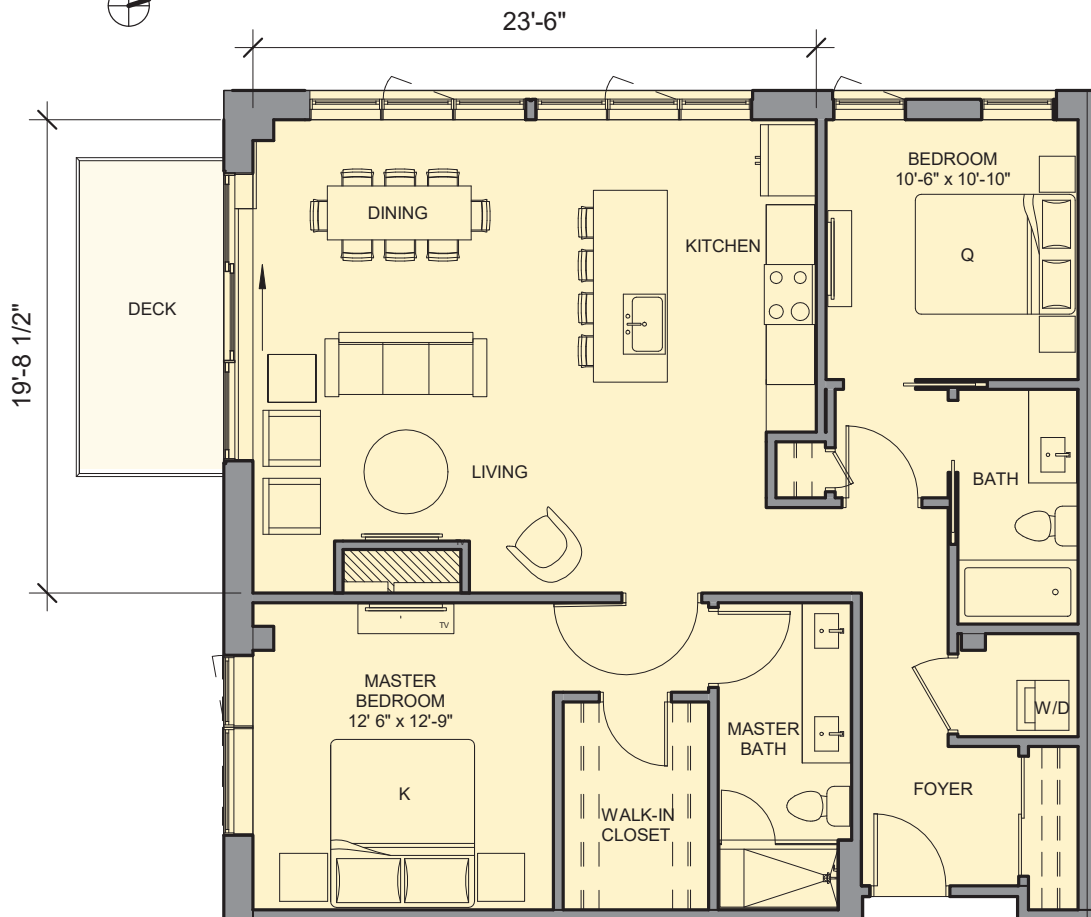
78 SF Deck*

*Once phase 3 is built
Unit 314 will have a patio of
equal size instead of a deck.

1/8" = 1'-0"



Areas shown are for marketing purposes only;
final square footage may vary.



FOR MORE INFO:

Visit our Sales Center at
15 Middle St. Ste. A2, Portland, ME

Sandra Johnson
+1 (207) 415-2128

Gail Landry
+1 (207) 650-8893

HOBSONSLANDING.COM





HOBSON'S LANDING

CHART YOUR
COURSE IN
PORTLAND
MAINE

at 383 Commercial Street

PERSONALIZE YOUR DESIGN



THOUGHTFULLY DESIGNED KITCHENS

Choose from 4:

- Cabinetry Finishes
- Stone or Quartz Countertops



LUXURIOUS MASTER BATHROOMS

Choose from 4:

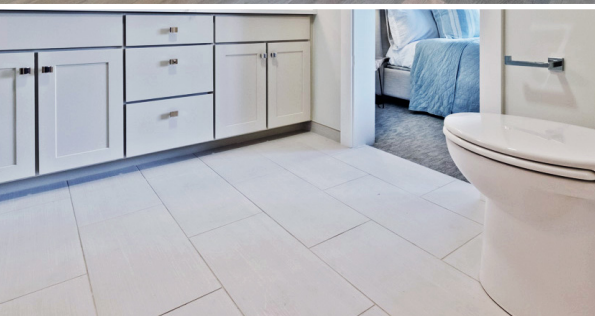
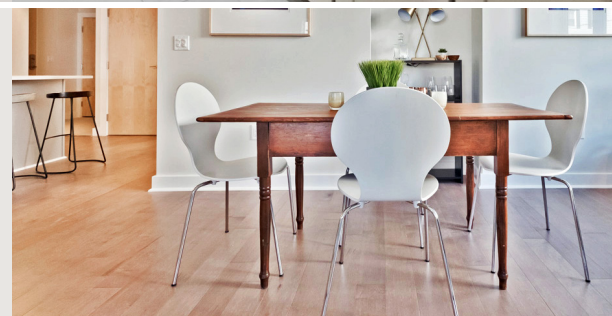
- Cabinetry Finishes
- Stone or Quartz Countertops



HARDWOOD FLOORING

Choose from 3:

- Engineered Wood Floors



RADIANT HEAT & THERMADOR APPLIANCE

Package available.



FOR MORE INFO:

Visit our Sales Center at
15 Middle St. Ste. A2, Portland, ME

Sandra Johnson
+1 (207) 415-2128

Gail Landry
+1 (207) 650-8893

HOBSONSLANDING.COM

