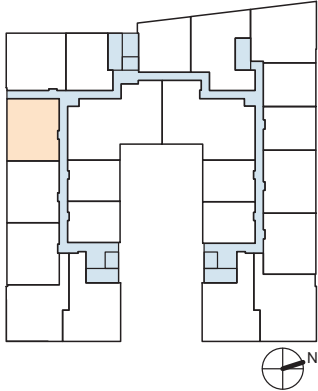


HOBSON'S LANDING

at 383 Commercial Street

CHART YOUR
COURSE IN
PORTLAND
MAINE



UNIT 316

2 Bedroom | 2 Bath

1,195 Square Feet

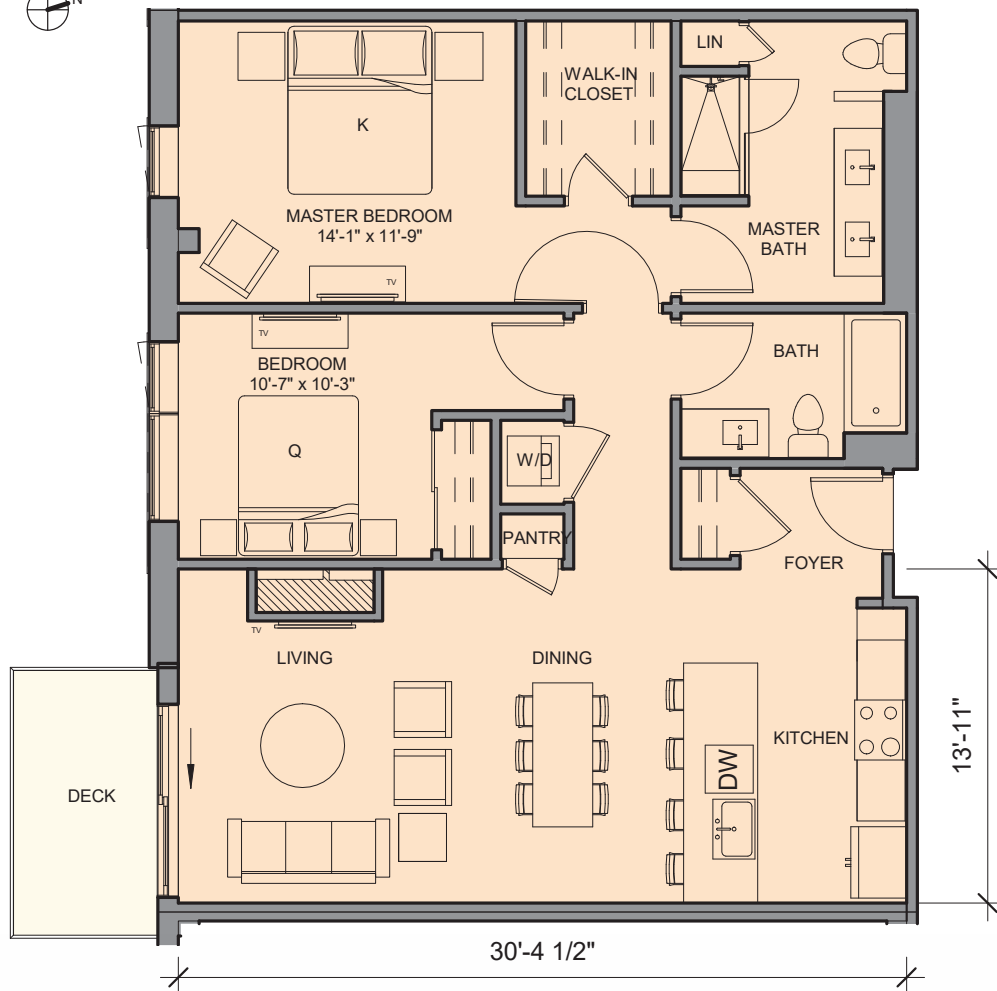
66 SF Deck*

***Once phase 3 is built
Unit 316 will have a patio of
equal size instead of a deck.**

1/8" = 1'-0"



*Areas shown are for marketing
purposes only; final square
footage may vary.*



FOR MORE INFO:

Visit our Sales Center at
15 Middle St. Ste. A2, Portland, ME

Sandra Johnson
+1 (207) 415-2128

Gail Landry
+1 (207) 650-8893

HOBSONSLANDING.COM



HOBSON'S LANDING

CHART YOUR
COURSE IN
PORTLAND
MAINE

at 383 Commercial Street

PERSONALIZE YOUR DESIGN



THOUGHTFULLY DESIGNED KITCHENS

Choose from 4:

- Cabinetry Finishes
- Stone or Quartz Countertops



LUXURIOUS MASTER BATHROOMS

Choose from 4:

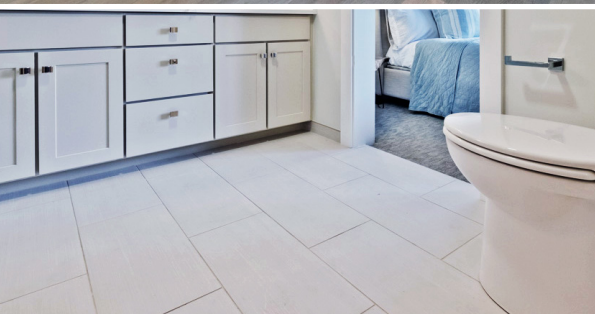
- Cabinetry Finishes
- Stone or Quartz Countertops



HARDWOOD FLOORING

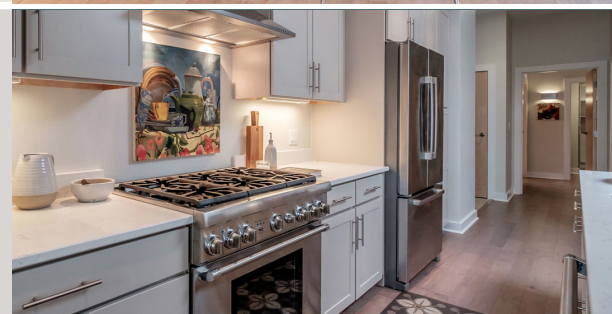
Choose from 3:

- Engineered Wood Floors



RADIANT HEAT & THERMADOR APPLIANCE

Package available.



FOR MORE INFO:

Visit our Sales Center at
15 Middle St. Ste. A2, Portland, ME

Sandra Johnson
+1 (207) 415-2128

Gail Landry
+1 (207) 650-8893

HOBSONSLANDING.COM

