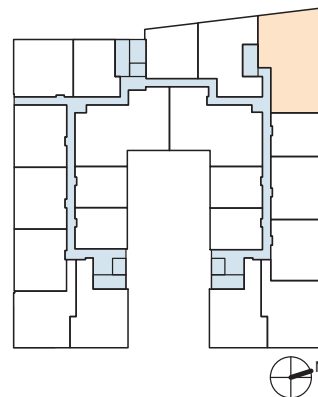
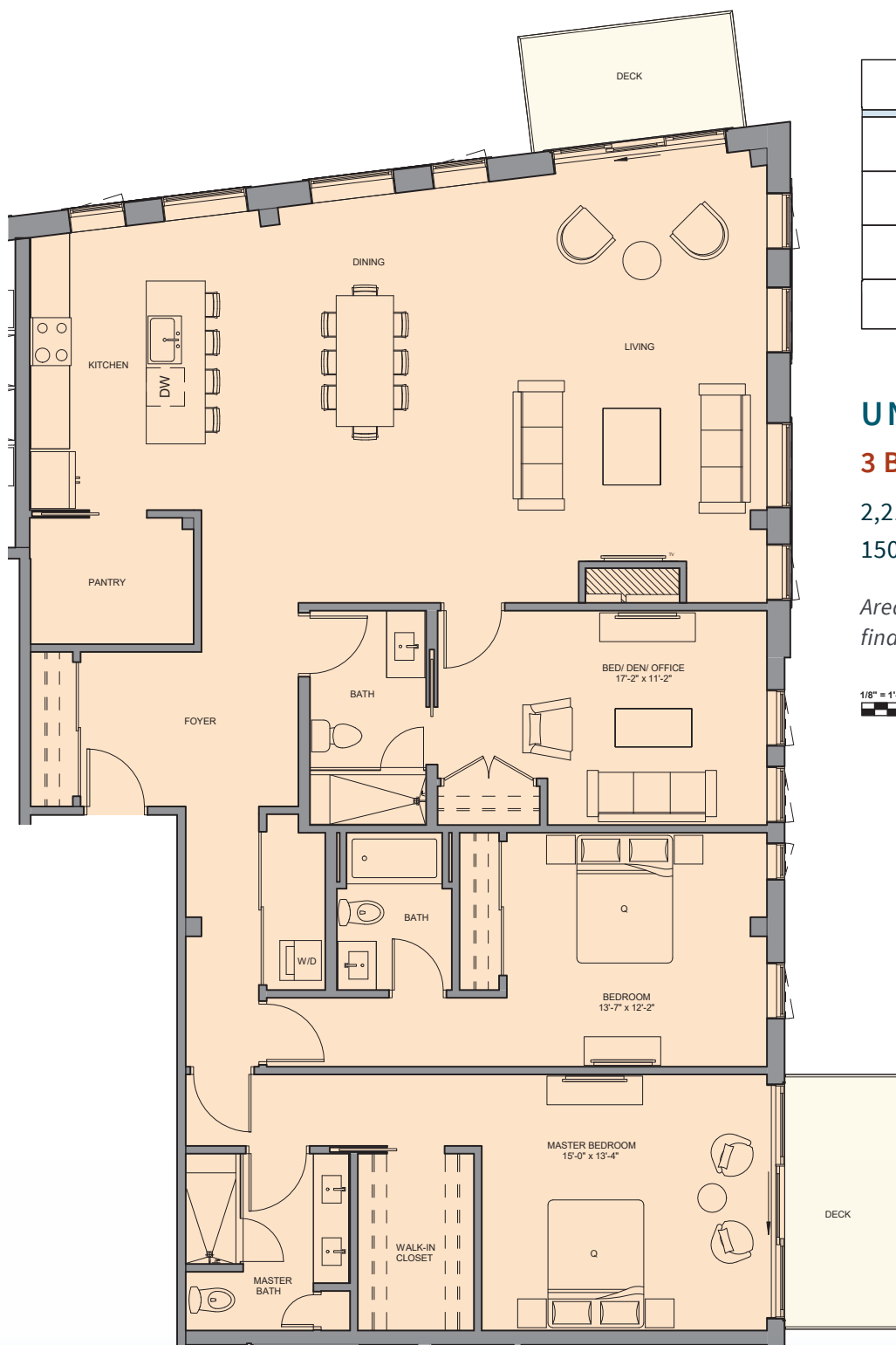


HOBSON'S LANDING

CHART YOUR
COURSE IN
PORTLAND
MAINE

at 383 Commercial Street



UNIT 509

3 Bedroom | 3 Bath

2,218 Square Feet

150 SF Deck

*Areas shown are for marketing purposes only;
final square footage may vary.*



FOR MORE INFO:

Visit our Sales Center at
15 Middle St. Ste. A2, Portland, ME

Sandra Johnson
+1 (207) 415-2128

Gail Landry
+1 (207) 650-8893

HOBSONSLANDING.COM





HOBSON'S LANDING

CHART YOUR
COURSE IN
PORTLAND
MAINE

at 383 Commercial Street

PERSONALIZE YOUR DESIGN



THOUGHTFULLY DESIGNED KITCHENS

Choose from 4:

- Cabinetry Finishes
- Stone or Quartz Countertops



LUXURIOUS MASTER BATHROOMS

Choose from 4:

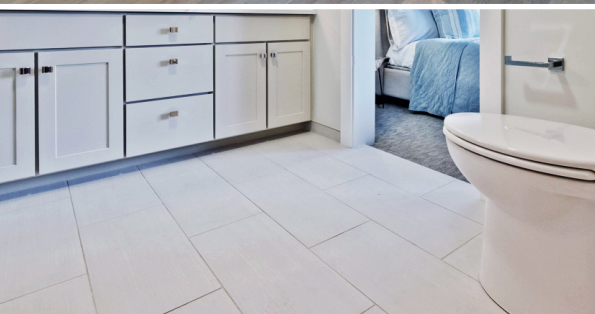
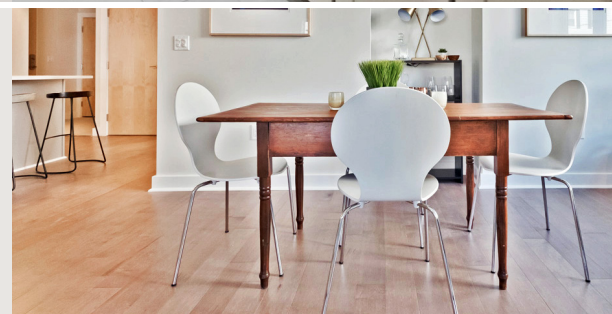
- Cabinetry Finishes
- Stone or Quartz Countertops



HARDWOOD FLOORING

Choose from 3:

- Engineered Wood Floors



RADIANT HEAT & THERMADOR APPLIANCE

Package available.



FOR MORE INFO:

Visit our Sales Center at
15 Middle St. Ste. A2, Portland, ME

Sandra Johnson
+1 (207) 415-2128

Gail Landry
+1 (207) 650-8893

HOBSONSLANDING.COM

