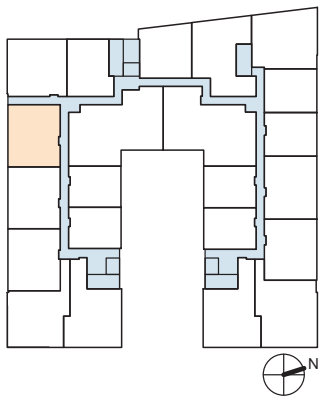


HOBSON'S LANDING

CHART YOUR
COURSE IN
PORTLAND
MAINE

at 383 Commercial Street



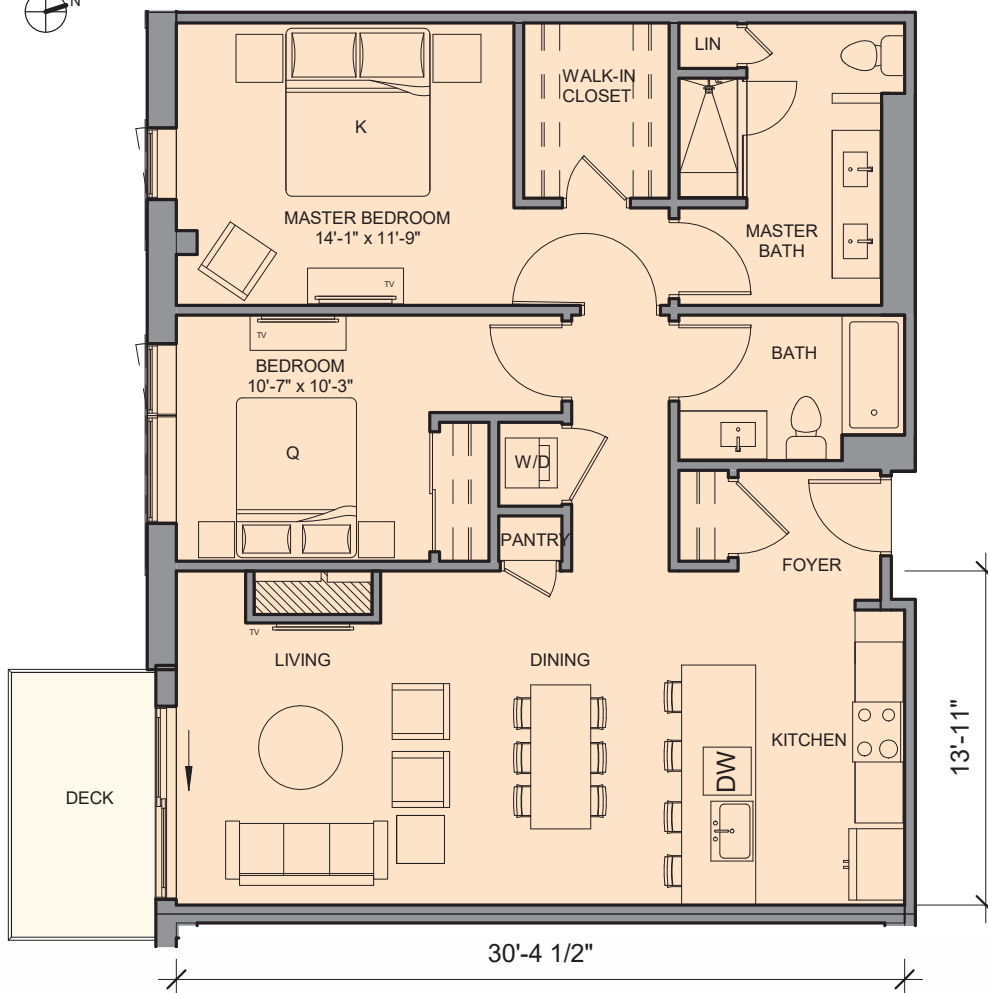
UNIT 516 2 Bedroom | 2 Bath

1,195 Square Feet
66 SF Deck

1/8" = 1'-0"



Areas shown are for marketing purposes only; final square footage may vary.



FOR MORE INFO:

Visit our Sales Center at
15 Middle St. Ste. A2, Portland, ME

Sandra Johnson
+1 (207) 415-2128

Gail Landry
+1 (207) 650-8893

HOBSONSLANDING.COM



HOBSON'S LANDING

CHART YOUR
COURSE IN
PORTLAND
MAINE

at 383 Commercial Street

PERSONALIZE YOUR DESIGN



THOUGHTFULLY DESIGNED KITCHENS

Choose from 4:

- Cabinetry Finishes
- Stone or Quartz Countertops



LUXURIOUS MASTER BATHROOMS

Choose from 4:

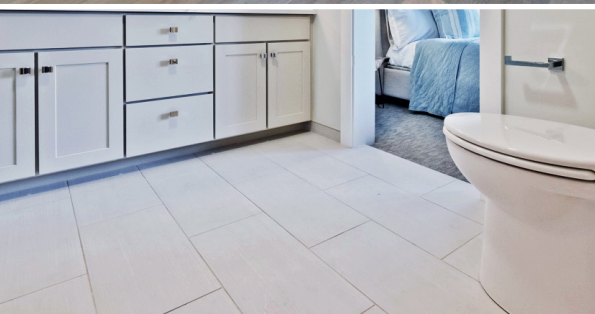
- Cabinetry Finishes
- Stone or Quartz Countertops



HARDWOOD FLOORING

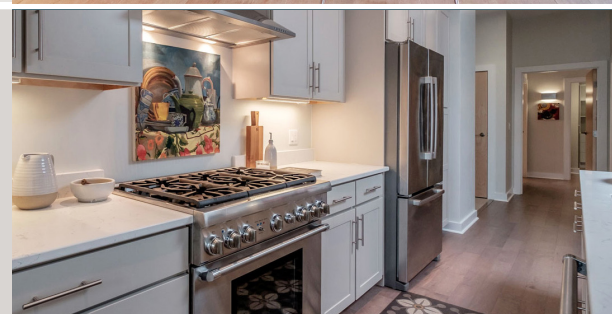
Choose from 3:

- Engineered Wood Floors



RADIANT HEAT & THERMADOR APPLIANCE

Package available.



FOR MORE INFO:

Visit our Sales Center at
15 Middle St. Ste. A2, Portland, ME

Sandra Johnson
+1 (207) 415-2128

Gail Landry
+1 (207) 650-8893

HOBSONSLANDING.COM

