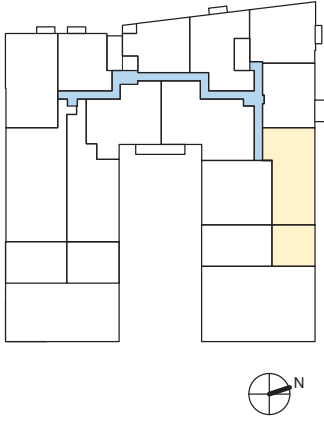


HOBSON'S LANDING

at 383 Commercial Street

CHART YOUR COURSE IN PORTLAND MAINE

5/32" = 1'-0"



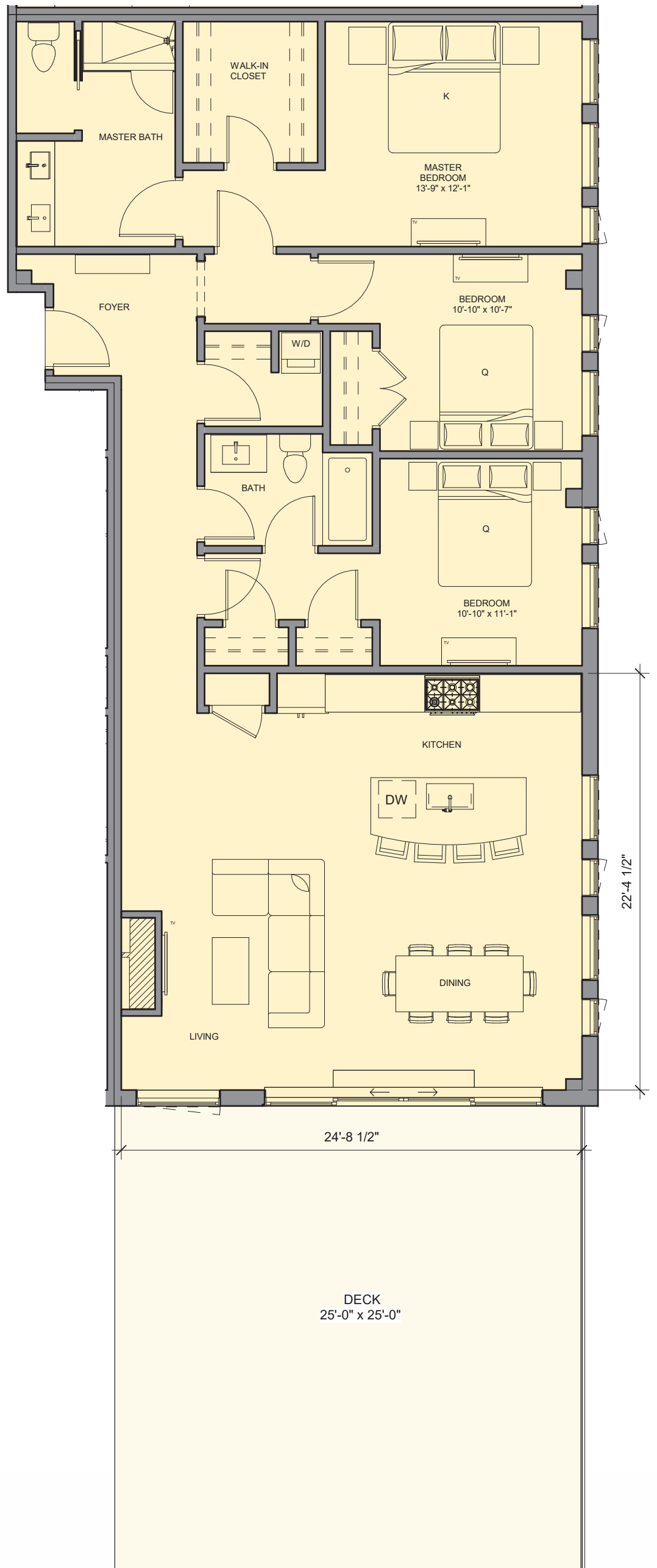
UNIT 600

3 Bedroom | 2 Bath

1,623 Square Feet

625 SF Deck

Areas shown are for marketing purposes only;
final square footage may vary.



FOR MORE INFO:

Visit our Sales Center at
15 Middle St. Ste. A2, Portland, ME

Sandra Johnson
+1 (207) 415-2128

Gail Landry
+1 (207) 650-8893

HOBSONSLANDING.COM