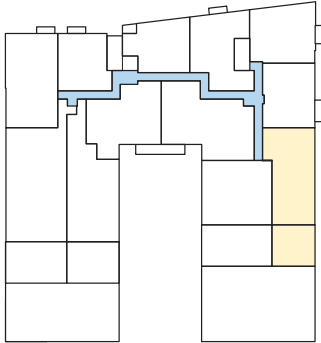


HOBSON'S LANDING

at 383 Commercial Street

CHART YOUR COURSE IN PORTLAND MAINE

3/16" = 1'-0"



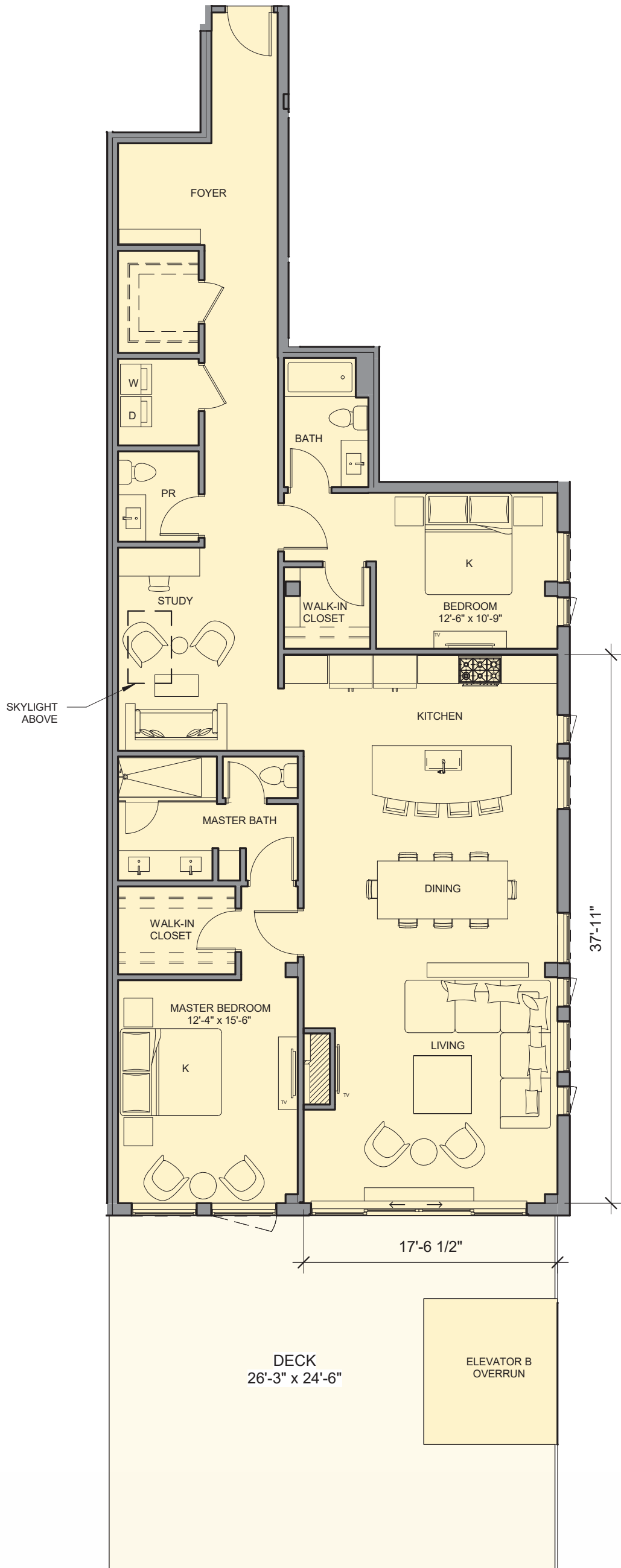
UNIT 609

2 Bedroom | 2 1/2 Bath

1,980 Square Feet

661 SF Deck

Areas shown are for marketing purposes only; final square footage may vary.



FOR MORE INFO:

Visit our Sales Center at
15 Middle St. Ste. A2, Portland, ME

Sandra Johnson | Gail Landry
+1 (207) 415-2128 | +1 (207) 650-8893

HOBSONSLANDING.COM