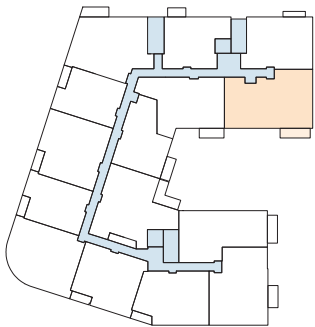


HOBSON'S LANDING

PHASE
2

AT 387 COMMERCIAL STREET



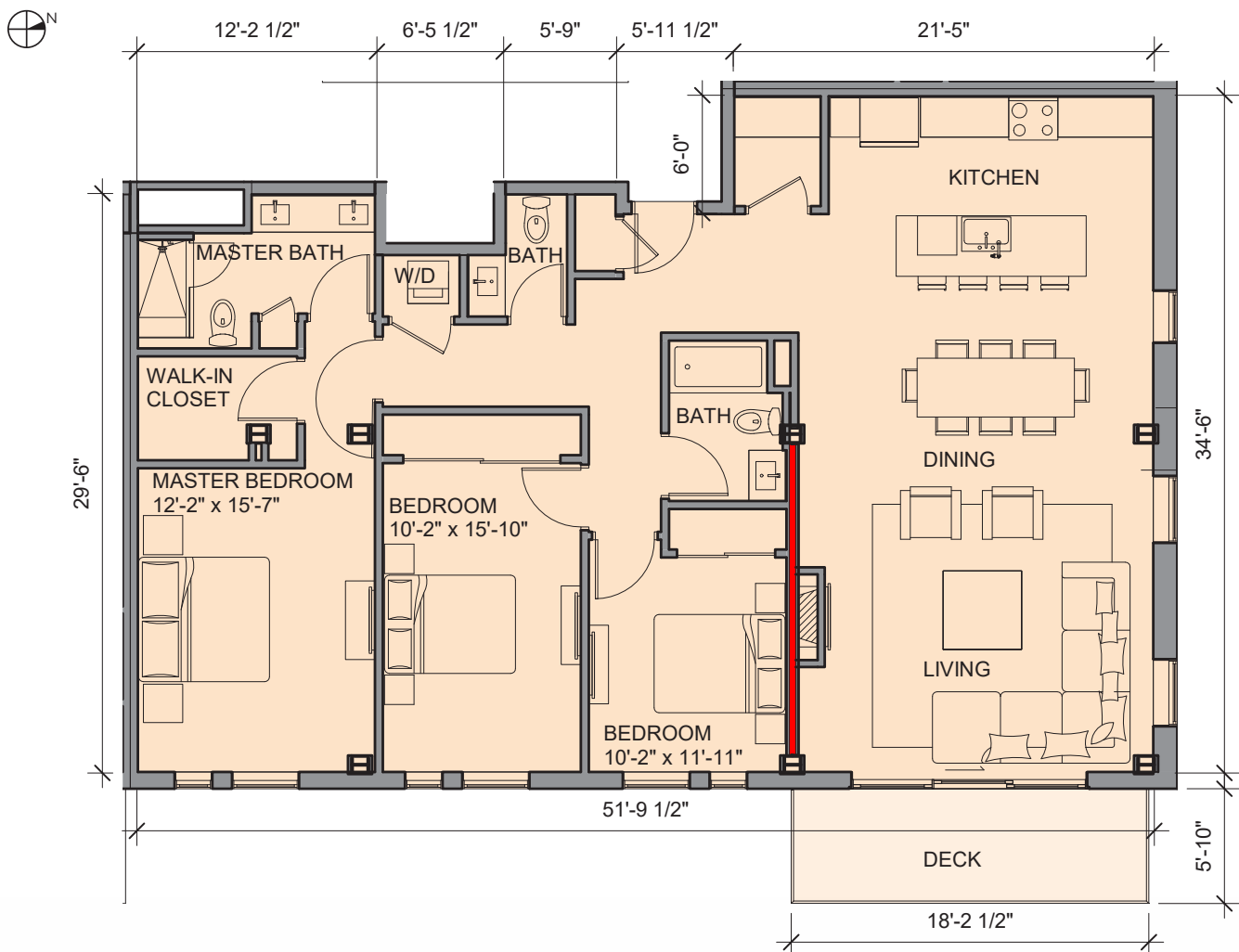
UNIT 433

3 Bedroom | 2 1/2 Bath

1,711 Square Feet

107 SF Deck

*Areas shown are for marketing purposes only;
final square footage may vary.*



FOR MORE INFO:

Visit our Sales Center at
383 Commercial St. Portland, ME

Sandra Johnson
+1 (207) 415-2128

Gail Landry
+1 (207) 650-8893

HOBSONSLANDING.COM



HOBSON'S LANDING

PHASE
2

AT 387 COMMERCIAL STREET

ELEGANTLY APPOINTED UNITS



THOUGHTFULLY DESIGNED KITCHENS

Choose from:

- Cabinetry Finishes
- Stone or Quartz Countertops



LUXURIOUS PRIMARY BATHROOMS

Choose from:

- Cabinetry Finishes
- Stone or Quartz Countertops
- Radiant Heat Available



ENGINEERED HARDWOOD FLOORING

Choose from:

- 3 Available Finishes



PROFESSIONAL GRADE APPLIANCES

- GE Cafe – Standard
- Thermador – Available
- Wolf & Subzero – Penthouses



FOR MORE INFO:

Visit our Sales Center at
383 Commercial St. Portland, ME

Sandra Johnson
+1 (207) 415-2128

Gail Landry
+1 (207) 650-8893

HOBSONSLANDING.COM

