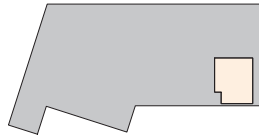
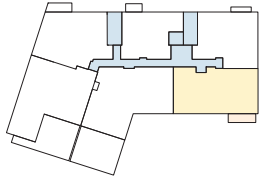


# HOBSON'S LANDING

PHASE  
2

AT 387 COMMERCIAL STREET



## UNIT 710 PENTHOUSE

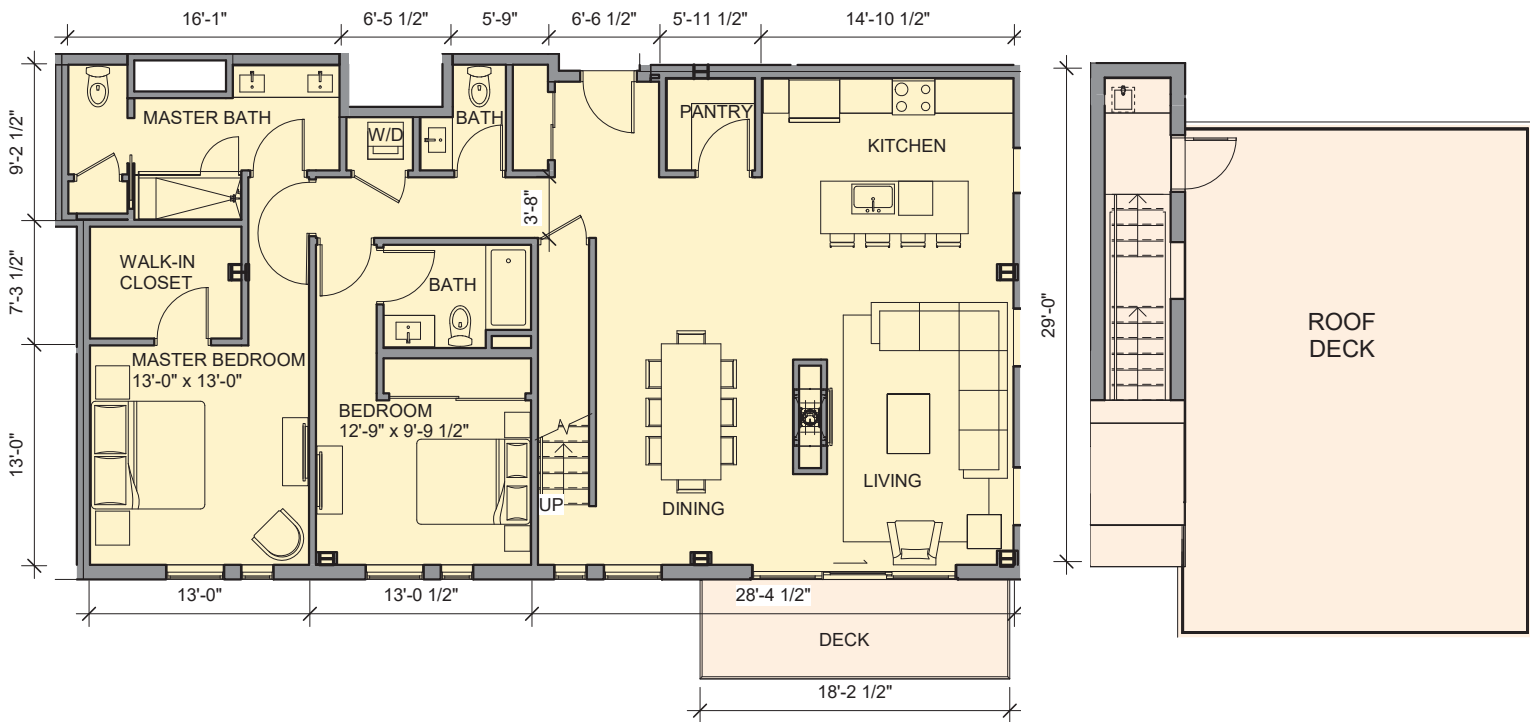
2 Bedroom | 2½ Bath

1,672 Square Feet

586 SF Roof Deck

107 SF Deck

*Areas shown are for marketing purposes only;  
final square footage may vary.*



### FOR MORE INFO:

Visit our Sales Center at  
383 Commercial St. Portland, ME

Sandra Johnson  
+1 (207) 415-2128

Gail Landry  
+1 (207) 650-8893

[HOBSONSLANDING.COM](http://HOBSONSLANDING.COM)



# HOBSON'S LANDING

PHASE  
2

AT 387 COMMERCIAL STREET

## ELEGANTLY APPOINTED UNITS



### THOUGHTFULLY DESIGNED KITCHENS

Choose from:

- Cabinetry Finishes
- Stone or Quartz Countertops



### LUXURIOUS PRIMARY BATHROOMS

Choose from:

- Cabinetry Finishes
- Stone or Quartz Countertops
- Radiant Heat Available



### ENGINEERED HARDWOOD FLOORING

Choose from:

- 3 Available Finishes



### PROFESSIONAL GRADE APPLIANCES

- GE Cafe – Standard
- Thermador – Available
- Wolf & Subzero – Penthouses



### FOR MORE INFO:

Visit our Sales Center at  
383 Commercial St. Portland, ME

Sandra Johnson  
+1 (207) 415-2128

Gail Landry  
+1 (207) 650-8893

[HOBSONSLANDING.COM](http://HOBSONSLANDING.COM)

